



Default Login Information	
Username: admin	Password: admin



WHAT'S IN THE BOX					
Quick setup guide		1	Sunshield screws		1 Set
Mounting template		1	Screws and plastic anchors - 4pcs		1 Set
Sunshield		1	T-Wrench		1

NOTE: Download all your support materials and tools in one place

- Go to: <http://www.digital-watchdog.com/resources>
- Search your product by entering the part number in the **'Search by Product'** search bar. Results for applicable part numbers will populate automatically based on the part number you enter.
- Click **'Search'**. All supported materials, including manuals and quick start guide (QSGs) will appear in the results.



Attention: This document is intended to serve as a quick reference for initial set-up. It is recommended that the user read the entire instruction manual for complete and proper installation and usage.

Tel: +1 (866) 446-3595 / (813) 888-9555

digital-watchdog.com

Technical Support Hours:
9:00AM – 8:00PM EST, Monday thru Friday

STEP 1 – PREPARING TO MOUNT THE CAMERA

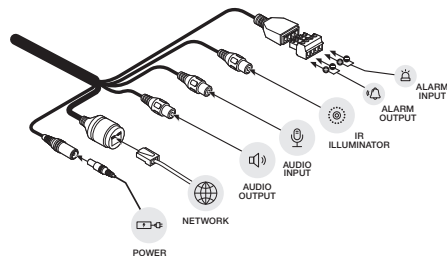
- The mounting surface must bear five times the weight of your camera (2.2 lbs).
- Mind the cables and power line to avoid damage.
- CAUTION:** These servicing instructions are for use by qualified service personnel only. To reduce the risk of electric shock do not perform any servicing other than that contained in the operating instructions unless you are qualified to do so.
- This product is intended to be supplied by a UL Listed Power Supply Unit marked “Class 2” or “LPS” or “PS2” and rated 12 Vdc, 880 mA min.
- The wired LAN hub providing power over the Ethernet (PoE) in accordance with IEEE 802-3af shall be a UL Listed device with the output evaluated as a Limited Power Source as defined in UL60950-1 or PS2 as defined in UL62368-1.
- Unit is intended for installation in a Network Environment 0 as defined in IEC TR 62102. As such, associated Ethernet wiring shall be limited to inside the building.
- Using the mounting template sheet or the camera itself, mark and drill the necessary holes in the wall or ceiling.

STEP 2 – CABLING THE CAMERA TO EXTERNAL DEVICES

Pass the wires through the mount bracket and make all necessary connections.

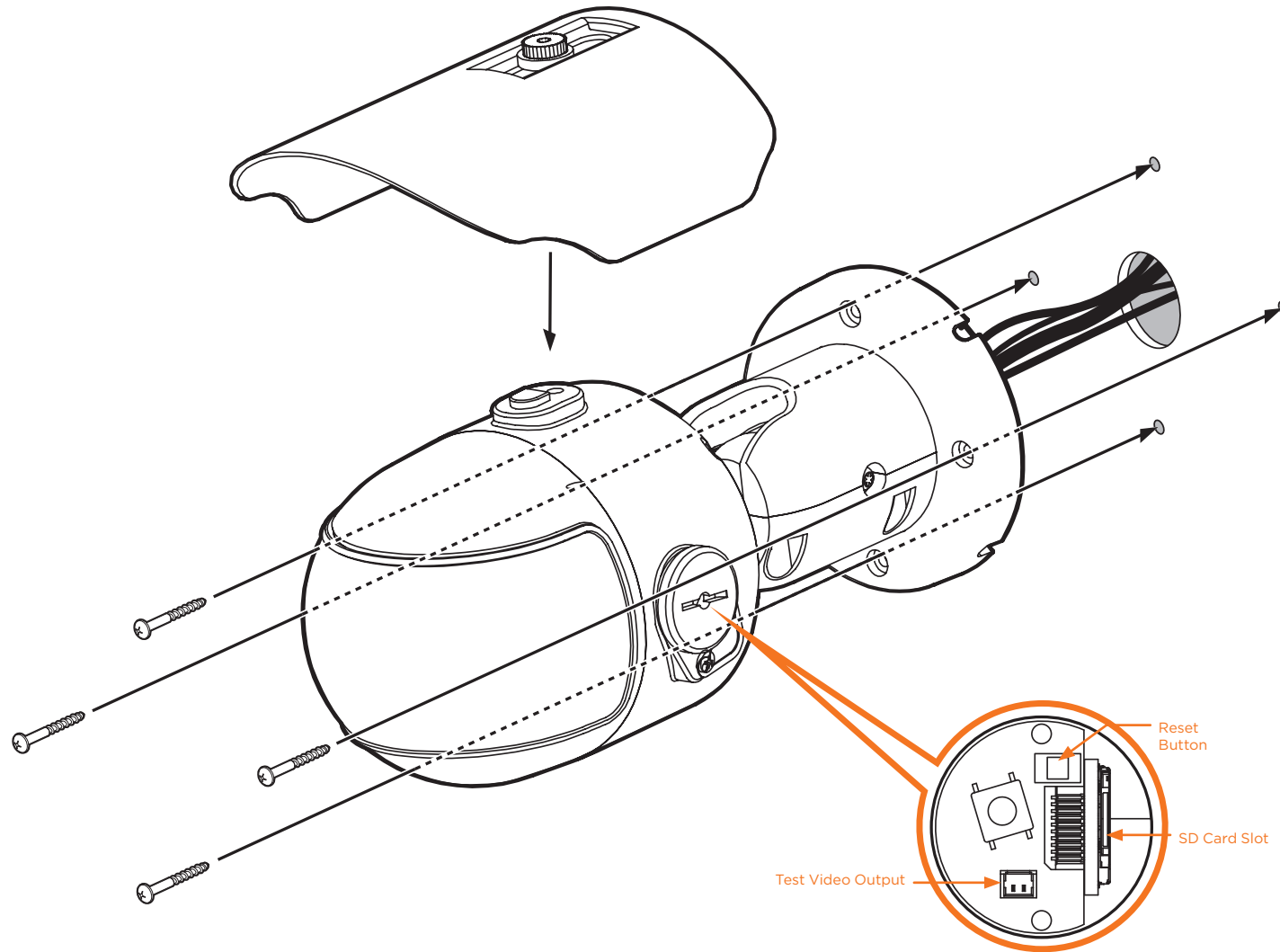
- NETWORK CONNECTIONS** – If you are using a PoE Switch, connect the camera using an Ethernet cable for both data and power.
- NETWORK CONNECTIONS** – If you are using a non-PoE switch, connect the camera to the switch using an Ethernet cable for data transmission and use a power adapter to power the camera.

Power requirements	Power consumption
DC12V, PoE IEEE 802.3at Class 3 (adapter not included)	TDN On: MAX 10.1W TDN Off: 7.7W



STEP 3 – INSTALLING THE CAMERA

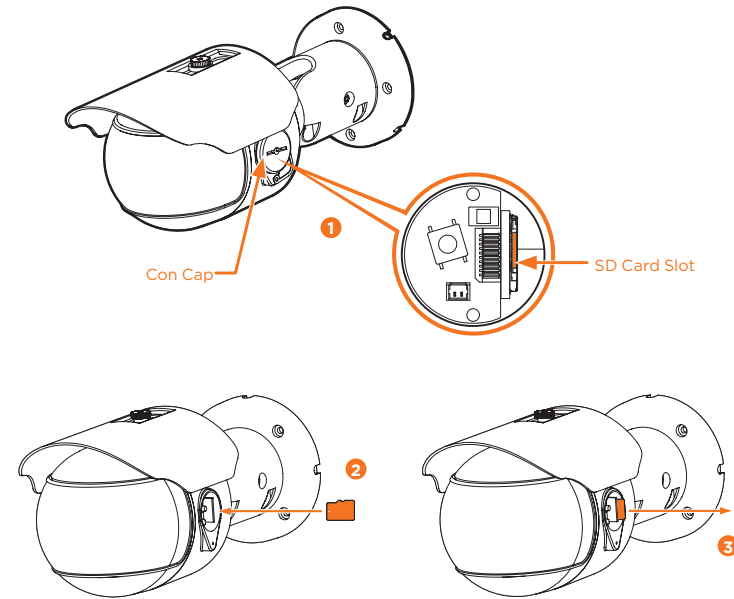
- Once all cables are connected, secure the camera to the mounting surface using the included screws.
- To adjust the camera's pan and tilt, loosen the pan/tilt stopper screw. Adjust the camera's position as needed. You may use the camera's video test cable for local image view.
- Attach the sunshield to the camera by using the provided sunshield screws.



STEP 4 – MANAGING THE SD CARD

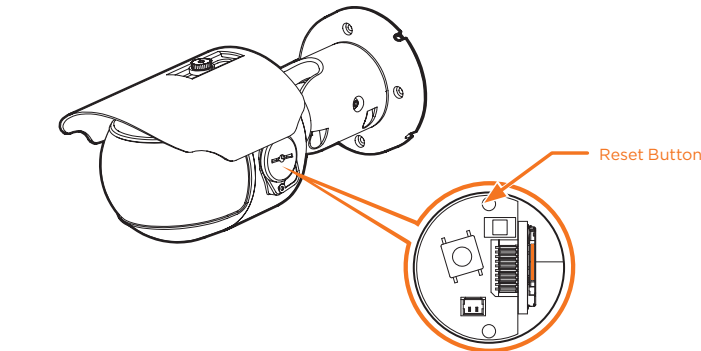
To install the memory card (not included):

1. To install the camera's SD Card, locate the SD card slot in the side of the camera by unscrewing the con cap.
2. Insert class 10 SD/SDHC/SDXC card into the SD card slot by pressing the SD card until clicks.
3. To remove the SD card, press the card inward until it clicks to release from the card slot then pull out from the slot



STEP 5 – RESETTING THE CAMERA

To reset the camera, use the tip of a paper clip or a pencil and press the reset button. Pressing the button for five (5) seconds will initiate a camera-wide reset of all the settings, including network settings.



STEP 6 – DW IP FINDER[™]

Use the DW IP Finder[™] software to scan the network and detect all MEGApix[®] cameras, set the camera's network settings or access the camera's web client.

Thumbnail view

Select network to scan

Filter device type to scan

Scan devices

Show/hide thumbnail view

Refresh thumbnail view

Bulk IP assignment

Firmware upgrade

Firmware version

Camera's uptime

Open Device configuration settings

Device's information

Thumbnail	Name	IP Address	Model	MAC Address	Netmask	Gateway	Port	DHCP	Version	Ping Test	IP Conf.	Uptime
	DWC-MPTZ30X	192.168.150.34	DWC-MPTZ30X	00:07:DB:19:10:1A	255.255.255.0	192.168.150.1	80	Disabled	1.9.94-X2_release	Ping	Click	-- --
	DWC-MV44WA	192.168.150.40	DWC-MV44WA	00:0D:F1:21:53:8F	255.255.255.0	192.168.150.1	80	Disabled	A2.01.02_20180619	Ping	Click	28day 14hrs 1mins
	DWC-PZ21M69T	192.168.150.41	DWC-PZ21M69T	00:0D:F1:21:29:21	255.255.255.0	192.168.150.1	80	Disabled	A5.01.03_20180403	Ping	Click	39day 15hrs 54mins
	DWC-PVX16W4	192.168.150.42	DWC-PVX16W4	00:0D:F1:21:5C:AD	255.255.255.0	192.168.150.1	80	Disabled	S2.01.03_20180309	Ping	Click	56day 16hrs 46mins
	DWC-PF9M1TR	192.168.150.61	DWC-PF9M1TR	00:0A:61:1A:00:14	255.255.255.0	192.168.150.1	80	Disabled	-	Ping	Click	-- --
	DWC-PVF9M2TR	192.168.150.62	DWC-PVF9M2TR	00:0A:61:1A:26:E7	255.255.255.0	192.168.50.1	80	Disabled	-	Ping	Click	-- --
	DWC-MF4WH4	192.168.150.63	DWC-MF4WH4	00:0D:F1:20:FB:60	255.255.255.0	192.168.150.1	80	Disabled	A2.01.02_20180619	Ping	Click	28day 14hrs 0mins

Network Setup

1. To install the DW IP Finder[™], go to: <http://www.digital-watchdog.com>
2. Enter "DW IP Finder" on the search box at the top of the page and press Enter.
3. Click on the DW IP Finder from the search result and go to Software tab. Click on download icon to download the DW IP Finder installation file.
4. Run the installation file and follow the wizard to install the DW IP Finder[™]. Open the DW IP Finder[™] and click 'Scan Devices'. It will scan the selected network for all supported devices and list the results in the table. During the scan, the DW logo will turn gray.

- i** Select DHCP if the internet service is dynamic IP. This will allow the camera to receive its IP address from the DHCP server.
- i** Select "Static" to manually enter the camera's IP address, (Sub) Netmask, Gateway and DNS information.
* The camera's IP must be set to Static if connecting to DW Spectrum
- i** Contact your network administrator for more information.

i Default TCP/IP information: DHCP

5. Select a camera from the list by double-clicking on the camera's image or clicking on the 'Click' button under the IP Conf. column. The pop-up window will show the camera's current network settings, allowing admin users to adjust the settings as needed.
6. To access the camera's web page, click on 'View Camera Website'.
7. To save the changes made to the camera's setting, input username and password of the camera and click Apply. Click "Scan Devices" from the main screen again to display the updated information.

i 'Port forwarding' has to be set in your network's router for external access to the camera.

i Default ID / PW : admin / admin

***NOTE:** For security purposes, it is highly recommended to change your password after initial setup.

DW Camera Settings

Camera Name: DWC-MD421TR
MAC Address: 00:0D:F1:20:A4:9E

IP Configuration Mode
☒ DHCP
☐ Static IP

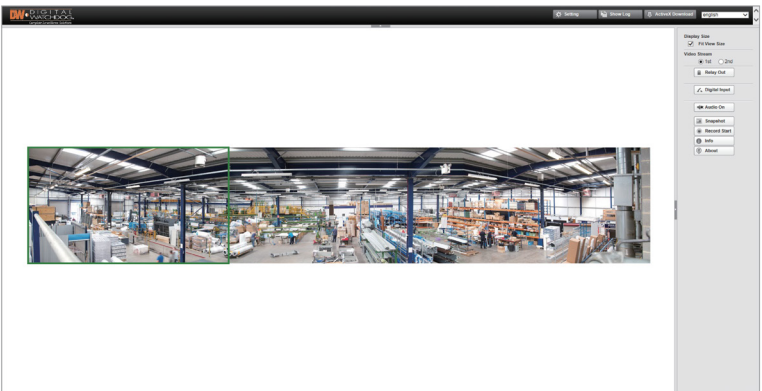
IP Address: 192.168.1.101
Netmask: 255.255.255.0
Gateway: 192.168.1.1
DNS: 192.168.40.1

Ports
Web Port: 80
Control Port: 0
Video Port: 0
Audio Transmit: 0
Audio Receive: 0

Username: admin
Password: *****

Restore default camera configuration
View Camera Website
Reboot
Apply
Cancel

STEP 7 – WEB VIEWER



The GUI display may differ by camera models.

Once the camera's network settings have been setup properly, you can access the camera's web viewer using the DW IP Finder[™].

To open the camera's web viewer:

1. Find the camera using the DW IP Finder[™].
2. Double-click on the camera's view in the results table.
3. Press the 'View Camera Website'. The camera's web viewer will open up in your default web browser.
4. Enter the camera's username and password (default are admin / admin).
5. If you are accessing the camera for the first time, install the ActiveX files in order to view video from the camera.

*** NOTE:** Some Menu options may not be available based on the camera model. See the full manual for more information.

NOTE: Please see the full product manual for web viewer setup, functions and camera settings options.