



To: Digital Watchdog® Customers
Date: July 26, 2016
Re: MEGApix® Snapit™ Outdoor Dome
Camera Cold Start Test Report

MEGApix® Snapit™ Outdoor Dome Camera -40°F/-40°C Temperature Test Report

1. APPLICANT

: CPRO SALES TEAM

2. TEST PURPOSE

: To check if the camera is working well at -40°degree or not.

3. TEST SAMPLE

- BUYER MODEL : DWC-MV421TIR (AMBA)
- CPRO MODEL : NK6(3.0)-MPR2300(IP)-TDN7-H2IR-IV-N(R1) COLD START

4. TEST METHOD

: Keep the camera in the -40° over 12 hours then check the operating.

5. TEST RESULT

: PASS (OK)

About 5~10 minutes to power on and there is no issue on working.

6. TEST PERIOD

: 2016. 06. 27 – 2016. 06. 30

7. REPORT ISSUE DATE

: 2016. 6. 30

TESTER

QC Team manager: S.O. Bang

APPROVE BY

QC Team General manager: T.H. Cho

[Schedule a Demo Today >](#)

Learn how Digital Watchdog will increase your profitability.



866.446.3595



sales@dwcc.tv



www.digital-watchdog.com



TEST RESULT

[1] SAMPLE SPECIFICATION and TEST CODE

a. BUYER MODEL : DWG-MV421TIR (AMBA)

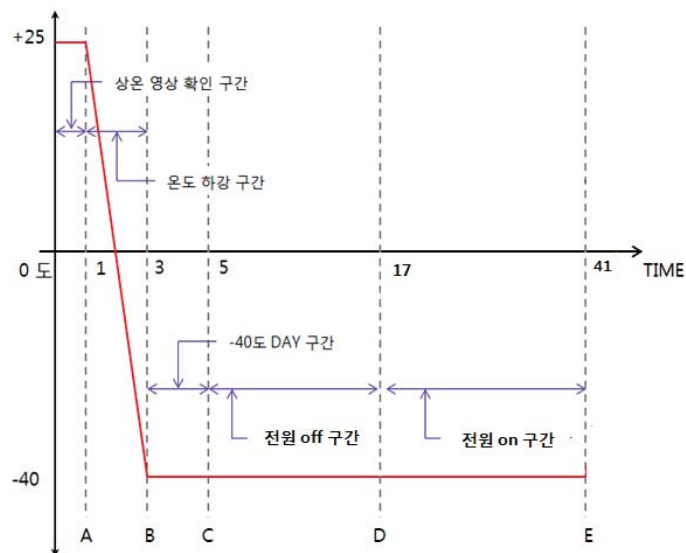
b. TEST METHOD : Keep the camera in the -40° over 12 hours then check the operating.

c. TEST CONDITION

- Test Sample QTY : 3ea
- Test Equipment : A Thermo-Hygrostat
- Test Temperature : -40°
- Power : PoE+ Hub
- Test Procedure
 - 1) Check the camera working over an hour at 25° 40%R.H setting.
 - 2) Reduce the temperature to -40°. (takes about 2 hours)
 - 3) Keep the camera at -40° over 2 hours then check the image.
 - 4) Leave a camera alone at -40° over 12 hours after off the POE power, then turn on the camera and check its booting and booting time.
 - 5) If the camera on without any issue, working the camera for over 24 hours.

d. EVALUATION STANDARD

- Should be no issue on working to see the image based on A,B,C,D and E conditions.



[Schedule a Demo Today >](#)

Learn how Digital Watchdog will increase your profitability.



866.446.3595



sales@dwcc.tv



www.digital-watchdog.com

TEST RESULT

TEST	RESULT	OK/NG
A section -> 1 Hour (Room Temperature)	No Issue.	PASS
B section -> 3 Hours (Temperature descent Section)	Focus – Not better than room temperature. But there is no issue at all once re-setting the focus. Function working well.	PASS (Focus Re-setting)
C section -> 5 Hours (-40° over 2 hours)	Focus – Ok. (Re-setting the focus at B section) Function working well.	PASS
D section -> 17 Hours (-40° check booting over 12 hours)	Booting after 5~10 minutes	PASS
E section -> 41 Hours (-40° working 24hours)	Focus – No issue Function – No issue	PASS

[2] TEST RESULT

- COMMENTS
 - > A, B, C Sections are the area that can be checked the initial camera defect.
 - > D, E sections are the area that can be checked the reliability of the installed camera which installed by installer at lower temperature environment.

[Schedule a Demo Today >](#)

Learn how Digital Watchdog will increase your profitability.



866.446.3595



sales@dwcc.tv



www.digital-watchdog.com

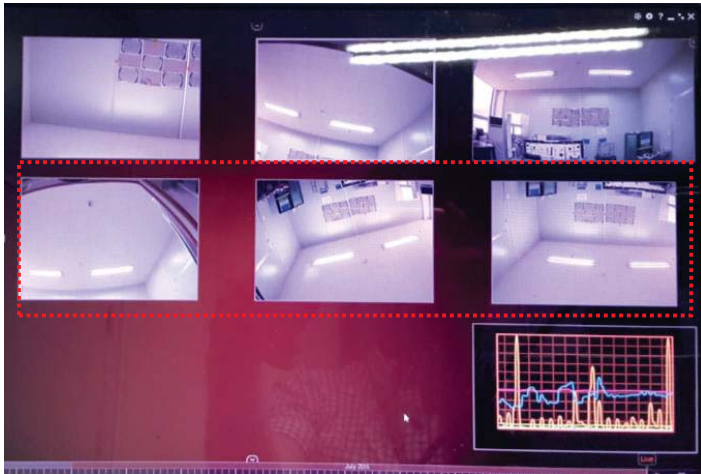
TEST PHOTO

[3] TEST PHOTO

- Chamber setting (Camera samples in the red square box)



- Test Image (refer to the images in the red box)



For Images or More Information

David Cho
Product Manager
Digital Watchdog
davidc@dwcc.tv
Toll Free: 866.446.3595
www.digital-watchdog.com

Schedule a Demo Today >

Learn how Digital Watchdog will increase your profitability.

866.446.3595 sales@dwcc.tv www.digital-watchdog.com